

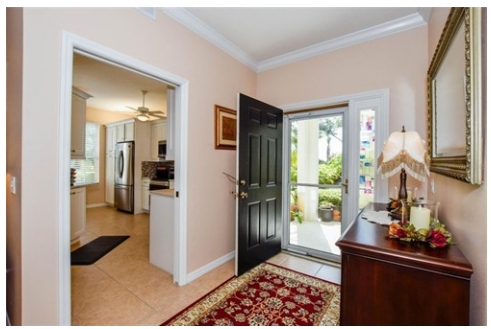


\$ 419,900



915 Barclay Ct, Venice, FL 34293

- » Beds: 3 | Baths: 2 Full
- » MLS #: A4607470
- » Single Family | 1,544 ft<sup>2</sup>
- » More Info: [915BarclayCt.IsForSale.com](http://915BarclayCt.IsForSale.com)



**Ashlee Coffey**  
 423.215.1486  
[ashleecoffey@michaelsaunders.com](mailto:ashleecoffey@michaelsaunders.com)  
<http://ashleecoffey.michaelsaunders.com/>

Sales Office  
 490 Rockley Blvd  
 Venice, FL 34293  
 (941) 485-5421



Remarks

JUST REDUCED. Sellers are very motivated. You don't want to miss out on this opportunity. This is your opportunity to own a piece of paradise in the highly sought-after Plantation Golf & County Club Community! This newly, remodeled villa of St. Andrews Park offers 3 beds/ 2 baths, and is freshly painted. It features an updated kitchen with Samsung appliances, marble counter tops and imported all-wood cabinets from Thailand. Beautiful tile and wood flooring throughout. The villa has crown molding that adorns the walls, and plantation shutters that create a warm and inviting space to live your best life. Imagine yourself sipping coffee in the newly rescreened lanai either off the kitchen or living room. This villa offers a new tiled roof in 2023, new rain gutters, new fire alarms, new toilets, and even a new mailbox. The air system has Halo filtration that clears the bacteria out of the room for cleaner breathing. This mature tree lined neighborhood is amenity rich offering 3 community pools and club house. Plantation Golf and Country Club offers a non-mandatory tiered membership that can include golf, tennis, pickleball and more. Easy access to I-75. downtown Wellen Park. Venice Island and multible beaches are at your fingertips. Embrace the coastal lifestyle and make this you next full-

